

**2024-2025**  
**PRODUCT CATALOG**

**dupey**

**EQUIPMENT CO**

FOOD EQUIPMENT SALES & SERVICE



2048 NW 92nd Ct

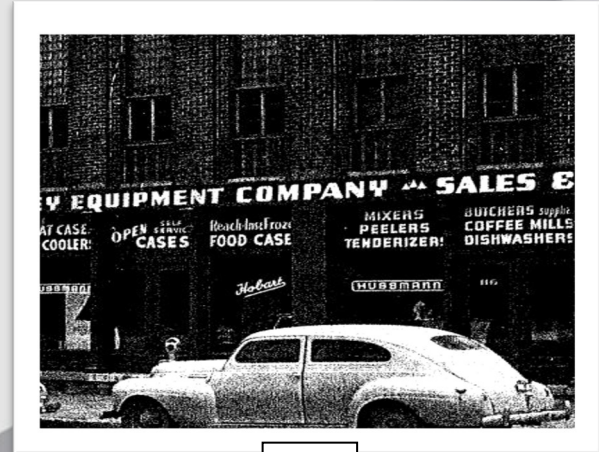
Clive, IA 50325

515-223-0700

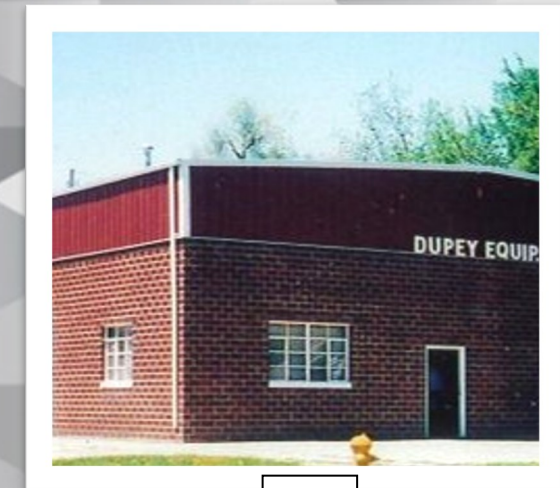
Dupeyequipment.com



1949



1955



1989



2024

# NEWLY WEDS SEASONING

Description	Item #	Quantity	Price
#358 Jerky	G22001	(5) 5 lb. Bags	\$120.70
102 Pork Sausage	G22026	(50) 8 oz. Bags	\$82.95
110 Pork Sausage	G22027	(50) 8 oz. Bags	\$92.85
1503 Bratwurst (No Sage)	G22151	(50) 8 oz. Bags	\$163.35
Beef Stick Unit #2	G20153	(5) 5 lb. 10 oz. Bags	\$98.65
Beef Stick Unit	G20163	(5) 5 lb. 10 oz. Bags	\$98.00
Best Meat Binder	G22010	50 lb. Case	\$79.90
Bologna Frank Unit	G20181	(5) 5 lb. 10 oz. Bags	\$83.75
Heller's Bratwurst Unit	G31530	(8) 5 lb. 10 oz. Bags	\$144.90
Heller's Colorado Beef Jerky	G31798	(16) 2 lb. 13 oz. Bags	\$135.25
Heller's Summer Sausage	G33203	(7) 5 lb. 14 oz. Bags	\$162.65
Hot Italian Sausage	G20529	(24) 8 oz. Bags	\$59.20
Pepperoni Unit	G20277	(5) 5 lb. 10 oz. Bags	\$95.00
Polish Sausage Unit	G20062	(5) 5 lb. 10 oz. Bags	\$108.65
Roast Pork Rub	G22041	(5) 5 lb. Bags	\$96.10
Process Z	G20803	(50) 8 oz. Bags	\$102.05
Salami Unit	G21592	(5) 5 lb. 10 oz. Bags	\$96.70
Smoked Pork Sausage	G20856	(5) 5 lb. 10 oz. Bags	\$67.25
Smokehouse Chicken without MSG	G22337	(5) 5 lb. Bags	\$95.10
Sodium Erythorbate	R01570	10 lb. Case	\$71.00
Summer Sausage Unit	G21034	(5) 5 lb. 10 oz. Bags	\$89.00
Sweet Italian Sausage	G20036	(24) 8 oz. Bags	\$72.65



In the food processing and foodservice industries, Newly Weds® Foods is recognized as the premier global purveyor of customized breaders, batters, seasonings, and functional ingredients



## CURES

Description	Item #	Quantity	Price
Brown Sugar Bacon Cure	G20325	50 lb. Case	\$53.15
Brown Sugar Bacon Cure Mix	G20040	50 lb. Case	\$63.15
Complete Southern Brown Sugar Cure	G20310	50 lb. Case	\$58.65
Dry Rub Bacon Cure	G20242	50 lb. Case	\$62.35
Southern Brown Sugar Cure	G20234	50 lb. Case	\$55.40
Special Cure	G20059	50 lb. Case	\$55.80
Speed Cure	902108	(200) 1 oz. Bags	\$69.92
Speed Cure W/N with Color	G21797	(50) 4 oz. Bags	\$33.50
Sweeter Than Sweet Cure	G20394	50 lb. Case	\$54.45
Sweeter Than Sweet Dry Rub Bacon Cure	G20387	50 lb. Case	\$53.15
White Cure Mix W/N	G20402	50 lb. Case	\$53.65



# A.C. LEGG SEASONING



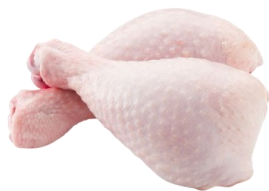
## Quality

A.C. Legg provides you with only the finest spices obtained from trustworthy, Global Food Safety Initiative (GFSI) compliant sources. An excellent end product starts here.



## Pork Sausage Blend 29

For those processors who want to produce sausage with an intermediate spice level. It contains less sage and pepper than blends 10 and 6



Description	Item #	Quantity	Price
BBQ Flavor Snack Stick	901157	(24) 11 oz. Bags	\$95.50
BBQ Seasoning & Rub	901165	(24) 8 oz. Bags	\$72.75
Bologna Frank	902100	(24) 14 oz. Bags	\$110.00
Bratwurst	901104	(24) 11 oz. Bags	\$94.75
Cajun Jerky	901132	(24) 14.25 oz. Bags	\$140.45
Fresh Polish Kielbasa	901108	(24) 11 oz. Bags	\$106.33
Hot Italian Sausage	901103	(24) 8 oz. Bags	\$72.77
Hot Pork Sausage	901109	(24) 9 oz. Bags	\$81.25
Maple Flavor Breakfast Sausage	901008	(24) 10 oz. Bags	\$74.45
Mild Italian Sausage	901102	(24) 8 oz. Bags	\$71.10
Peppered Jerky	901133	(24) 13.5 oz. Bags	\$132.00
Pizza Flavor Snack Stick	901158	(24) 8 oz. Bags	\$76.15
Pork Sausage (Blend 6)	901105	(24) 8 oz. Bags	\$71.10
Pork Sausage (Blend 7)	901107	(24) 8 oz. Bags	\$71.10
Pork Sausage (Blend 10)	901010	(24) 8 oz. Bags	\$71.10
<b>Pork Sausage (Blend 29)</b>	<b>901029</b>	<b>(24) 8 oz. Bags</b>	<b>\$71.10</b>
Smoked Polish Kielbasa	901106	(24) 11 oz. Bags	\$110.00
Snack Stick	901116	(24) 18.5 oz. Bags	\$135.35
Summer Sausage	901114	(24) 18 oz. Bags	\$128.62
Teriyaki Jerky	901134	(24) 20.25 oz. Bags	\$169.20
That's Italian	901019	(24) 1 lb. Bags	\$150.00

# MARINADES

Description	Item #	Quantity	Price
BBQ Marinade	901129	(24) 10.75 oz. Bags	\$110.00
Butter Garlic Marinade	901144	(24) 9.72 oz. Bags	\$135.35
Cajun Marinade	901120	(24) 7.5 oz. Bags	\$108.30
Greek Marinade	901146	(24) 9.25 oz. Bags	\$104.90
Hot & Spicy Marinade	901122	(24) 8 oz. Bags	\$110.00
Italian Marinade	901128	(24) 9 oz. Bags	\$106.60
Lemon Butter Marinade	901143	(24) 8.75 oz. Bags	\$113.85
Lemon Pepper Marinade	901121	(24) 7.25 oz. Bags	\$81.25
Mesquite Marinade	901142	(24) 10 oz. Bags	\$101.55
Natural Marinade	901119	(24) 7 oz. Bags	\$77.85
Teriyaki Marinade	901147	(24) 15.5 oz. Bags	\$177.70

# HI-TEMP CHEESE

Description	Item #	Quantity	Price
Cheddar Cheese	201327	5 lb. Bag	\$27.10
Hot Pepper	201329	5 lb. Bag	\$27.10

# RETAIL SEASONING

## Spice Craft Seasoning Shakers

Description	Item #	Quantity	Price
Prime Steak & Beef Burger	S12506	(12) 6.75 oz. Shakers/Case	\$30.50



## Hi Mountain Jerky Cure & Seasoning

Description	Item #	Quantity	Price
Cajun Blend	R01441	(12) Boxes/Case	\$100.00
Hickory Blend	R01440	(12) Boxes/Case	\$100.00
Inferno Blend	R00836	(12) Boxes/Case	\$100.00
Mesquite Blend	R01439	(12) Boxes/Case	\$100.00
Original Blend	R01438	(12) Boxes/Case	\$100.00
Pepper/Garlic Blend	R01445	(12) Boxes/Case	\$100.00
Pepper Steak Blend	R01479	(12) Boxes/Case	\$100.00
Teriyaki Blend	R01446	(12) Boxes/Case	\$100.00



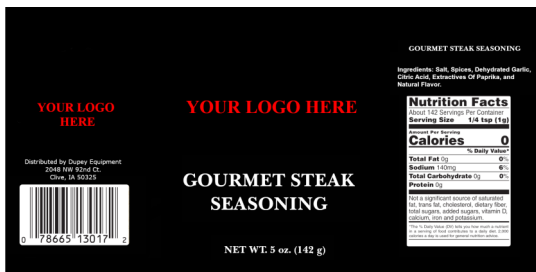
## Bad Byron's Butt Rub

Description	Item #	Quantity	Price
4.5 oz Shaker	Spice	12/Case	\$48.00



# PRIVATE LABEL SAUCES and SEASONINGS

## Private Label Seasoning



## Private Label Sauces



\*Note: Labels available for 19 oz. and 38 oz. bottles only. Labels are \$ .15

Description	Quantity	Flavors	Price
5 oz. Bottles	12 per Case	Cajun Style Blackened Seasoning	\$26.00
5 oz. Bottles	12 per Case	Gourmet Steak Seasoning	\$32.00

Description	Quantity	Flavors	Price
11 oz. Bottles	12 per Case	Steak Sauce	Call for pricing
19 oz. Bottles	12 per Case	Old Fashioned, Old Smokey, Tangy	\$55.00
38 oz. Bottles	12 per Case	Old Fashioned	\$90.00
1 gal. Jugs	4 per Case	Old Fashioned, Old Smokey, Tangy	\$97.00





## String Tied Casings

2½" x 20" Mahogany	908100	1-999 : \$.50/each	1,000+ : Take off \$.02/each
2½" x 20" Clear	909113	1-999 : \$.46/each	1,000+ : Take off \$.02/each
40" x 18" Clear Collagen Rounds	913100	1-999 : \$.49/each	1,000+ : Take off \$.02/each

## ICR Processed Casings

19 Caliber (20 mm Stuffed Diameter)

Mahogany	909096	54 Strands/Caddy	540# Finished Product	\$202.65
Clear	909095	54 Strands/Caddy	540# Finished Product	\$193.35

20 Caliber (21¼ mm Stuffed Diameter)

Mahogany	909097	54 Strands/Caddy	567# Finished Product	\$205.65
Clear	909098	54 Strands/Caddy	567# Finished Product	\$195.70

30 Caliber Clear (31.77 mm Stuffed Diameter)

Hybrid	909093	16 Strands/Caddy	393# Finished Product	\$111.60
--------	--------	------------------	-----------------------	----------

\*\*Note: Hybrid casings may be used for fresh or smoked product.

## VISTA—NIPPI Processed Casings

21 mm Mahogany	909100	54 Strands/Caddy	\$297.25
21 mm Processed Clear	909101	54 Strands/Caddy	\$251.30
32 mm Processed Clear	909103	24 Strands/Caddy	\$170.45

\*\*Note: 9 Caddies per case. Deduct \$5.00/Caddy for full case order.

## Natural Casings

21-23 Sheep Casings	911101	10 Strands/Hank	\$43.25
32-34 Hog Casings	911100	10 Strands/Hank	\$35.25

# MATERIAL HANDLING

## 7-Tier Freezer Carts

Ask about our Freezer Carts! These carts go hand in hand with these 5" freezer baskets!!



## Freezer Baskets

Commercial strength freezer baskets to help keep product in your freezers and coolers organized and secure.

16.5 W x 28 L x 5.25 D (Approx.)  
**\$27.00**



## Poly USDA Trucks

This poly taper truck is ideal for food processing, with resin and manufacturing techniques accepted by the USDA.

The smooth surface comes with a capped drain to facilitate easy cleaning and sanitizing. The hardware attaching the poly body to the caster plate is fully encapsulated and all corners are rounded.



Available in the following bushel volume sizes:  
 6, 8, 10, 12, 14, 16, 18, & 20.

# VACUUM POUCHES



Winpak's vacuum pouches can be used to package fresh and processed meats, cheese, seafood and other perishable products. Winpak has the technical expertise to Manufacture vacuum pouches with moderate barrier (PA/PE) or high barrier (PA/EVOH/PE) properties. Customers can rely on our vacuum pouches as the best choice for Modified Atmosphere Packaging (MAP) applications.

## Standard, 3-Mil. Vacuum Pouches

Description	Item #	Quantity	Price
2½" x 10"	10100	5,000	\$96.60
6" x 8"	10101	2,000	\$48.25
6" x 10"	10102	2,000	\$60.30
6" x 12"	10103	2,000	\$72.35
6" x 15"	10104	2,000	\$90.45
8" x 8"	10107	2,000	\$64.30
8" x 10"	10108	2,000	\$80.40
8" x 12"	10109	1,000	\$48.25
8" x 15"	10111	1,000	\$60.30
10" x 13"	10112	1,000	\$65.30
10" x 15"	10113	1,000	\$75.35
12" x 14"	10117	1,000	\$84.40
12" x 16"	10119	500	\$48.25
12" x 18"	10120	500	\$54.30
14" x 16"	10121	500	\$56.30
14" x 20"	10122	500	\$70.35
14" x 24"	10123	500	\$84.40
16" x 20"	10124	500	\$80.40
16" x 26"	10126	250	\$52.25

Take 5% off vacuum pouches until January!



## Reclosable Zip Vacuum Pouches

These 3 mil. pouches offer a 1/4" hang hole and a reclosable zipper for resealing the bag once opened.

Description	Item #	Quantity	Price
6" x 8"	10150	1,000	\$114.50
6" x 10"	10151	1,000	\$124.15
6" x 12"	10152	1,000	\$131.25
8" x 10"	10154	1,000	\$150.45
8" x 12"	10153	1,000	\$160.35
8" x 15"	10149	1,000	\$217.58

## Clear PVC Bone Guard

Prevent your vacuum pouches from being punctured by putting clear bone guard down prior to vacuum sealing.



Description	Item #	Quantity	Length	Price
4½" x 5"	15101	4 Rolls	465'/Roll	\$200.00
9" x 11"	15104	4 Rolls	150'/Roll	\$402.35

## DuraShrink® Barrier Shrink Bags

Winpak's DuraShrink® Bags maintain superior shrink performance by balancing a high shrink rate with a low shrink force. Winpak's DuraShrink® Bags are also available in an EVOH formulation, which provides high oxygen barrier in an eco-friendly bag.



## Black Vacuum Pouches

- 4 Mil
- Clear Front, Black Back



\*Call for pricing.

\*Note: These pouches are available upon request. Call for sizing and pricing.

# PATTY PAPER



## Patty Paper

Description	Item #	Size	Quantity	Color	Price
903-C (2-Ply Patty Paper)	20106	5" x 5"	14,000	White	\$129.75
904-C (2-Ply Patty Paper)	20108	5-3/16" x 5-3/16"	14,000	White	\$140.40
905-C (2-Ply Patty Paper)	20110	5½" x 5½"	14,000	White	\$165.00
Single Bulker Paper	20113	4" x 1,650'	4 Rolls	White	\$84.95

## Steak Paper

Description	Item #	Size	Quantity	Price
Green Steak Paper	20206	10" x 14"	1,000	\$50.20
Black Steak Paper	20211	10" x 30"	1,000	\$104.90

#28101 200/case  
\$143.00

**PATTY  
BOX**



## Poly Bags & Liners

**POLY  
CLIPS**

#300029—735 clips  
\$189.00  
#300030—740 clips  
\$205.75



Description	Mil.	Item #	Quantity	Price
6" x 4" x 15" (5# Ground Beef Bags)	1.5	16113	1,000	\$57.35
7" x 9"	1.5	16108	1,000	\$24.00
8" x 4" x 18" (10# Ground Beef Bags)	2.0	16100	1,000	\$130.75
9" x 15" (5# Ground Beef Bags)	1.5	16102	1,000	\$48.00
11" x 6" x 16" (Liner Bag)	1.0	16211	1,000	\$164.05
16½" x 12½" x 20½" (Liner Bag)	1.5	16206	500	\$120.25

# MEAT BAGS

**CUSTOM  
BAGS**

Let us set up custom meat bags printed with your company information on them!  
Call for Pricing!



## 1 Lb. Meat Bags

Description	Item #	Quantity	Price
Ground Beef	#35462001	1,000	\$45.00
Ground Beef Not For Sale	#35464001	1,000	\$45.00
Ground Pork	#35460011	1,000	\$45.00
Ground Pork Not For Sale	#35460012	1,000	\$45.00
Italian Sausage	#35462700	1,000	\$51.00
Pork Sausage	#35461001	1,000	\$45.00
Pork Sausage Not For Sale	#35463001	1,000	\$45.00
White Opaque	#35460001	1,000	\$45.00
Wild Game	#35465001	1,000	\$45.00

## 2 Lb. Meat Bags

Description	Item #	Quantity	Price
Ground Beef	#35462002	1,000	\$50.00
Ground Beef Not For Sale	#35464002	1,000	\$50.00
Pork Sausage	#35461002	1,000	\$50.00
Pork Sausage Not For Sale	#35463002	1,000	\$50.00
White Opaque	#35460002	1,000	\$50.00
Wild Game	#35465002	1,000	\$50.00

# SUPPLIES

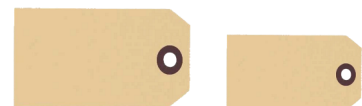
Description	Item #	Price
<b>Butcher Paper</b>		
15" x 1,000' White Butcher Paper	24501	\$38.60
18" x 1,000' White Butcher Paper	24502	\$45.05
24" x 1,000' White Butcher Paper	24500	\$60.05
<b>Freezer Paper</b>		
15" x 1,100' White Freezer Paper	24503	\$65.65
18" x 1,100' White Freezer Paper	24504	\$77.48
24" x 1,100' White Freezer Paper	24505	\$102.83
*Freezer Paper has a wax coating on the inside to help protect against freezer burn.		
<b>Clear Meat Wrapping Film</b>		
15" x 3,200' (1.25 mil.)	11300	\$108.50
18" x 3,200' (1.25 mil.)	16210	\$123.60
<b>Paper, Film Cutters</b>		
15" Paper Cutter, Counter Mount	PC15	\$50.50
18" Paper Cutter, Counter Mount	PC18	\$54.00
24" Paper Cutter, Counter Mount	PC24	\$65.50



2-Deck Tower Paper Cutter available. Please call for availability and pricing.



Description	Item #	Price
<b>Charsol</b>		
5 Gallon Pail	R01180	\$115.00
<b>Sawdust</b>		
Hickory Sawdust (40 lbs.)	40101	\$18.75
<b>Tape</b>		
1" x 500' White	84100	\$6.00/per roll
1" x 500' White, Safe Handling	84101	\$7.50/per roll
1" x 500' White, Not For Sale	84102	\$6.75/ per roll
404 Tape Shooter	BP404	\$299.00
Red Hamburger Tape (180 yards)	310554921	\$5.25/per roll
Bag Taping Machine	66275495	\$43.00
<b>Staples</b>		
711 VOAR 7/16" (2,000/Box)	83100	\$19.75 5 boxes/case
713 VOAR 9/16" (2,000/Box)	83101	\$37.00 5 boxes/case
Hog Ring Pliers	83104	\$47.50
SR-8 Galvanized Blunt (2,500/Box)	83102	\$22.50
<b>Cure Tags</b>		
Tyvek 442 #2 1000/box	17100	\$53.00
Heavy Manilla Tags (3 1/4" x 1 5/8")	449414925	\$20.00
Heavy Manilla Tags (4 3/4" x 2 3/8")	340207295	\$25.75
Deadlock Fasteners 1000/box	348931855	\$19.00





# SUPPLIES

Description	Item #	Quantity	Price
<b>Interfold Deli Paper</b>			
Heavy weight dry wax paper for wrapping foods of all types.			
5.5" x 5.5"	HP3581851	1,000 Sheets	\$13.65
8" x 10.75"	HP3581908	500 Sheets	\$8.00
12" x 10.75"	HP3581932	500 Sheets	\$11.60
<b>Interfold High Density Satin Pac</b>			
Clear polyethylene protection sheets for use as scale sheets, pick-up sheets, separators, and liners.			
8" x 10.75"	HP6782282	1,000 Sheets	\$11.75
12" x 10.75"	HP6782286	1,000 Sheets	\$14.35



## 35" Red Smoke Nets

Item #907100  
**\$27.55 per 100**



Description	Item #	Price
<b>Ham Tubing</b>		
21" Ham Tubing, (Approx. 3 lb./roll)	905100	\$34.00
<b>Roast Knit</b>		
#16 Roast Knit	906106	\$18.00
#18 Roast Knit	906104	\$19.15
#20 Roast Knit	906102	\$20.20
#22 Roast Knit	906105	\$23.50
#24 Roast Knit	906103	\$23.50
<b>Twine</b>		
#24 Butcher Twine	16303	\$15.50

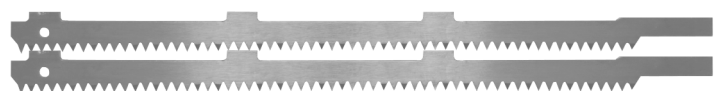
# SAW BLADES

Description	Item #	Price
<b>Band Saw Blades</b>		
91" - 112" (3 & 4 Teeth/Inch)		\$9.10
116" - 142" (3 & 4 Teeth/Inch)		\$10.00
<b>Hand Saws</b>		
20" Frame with Blade	#80126	\$67.00
25" Frame with Blade	#80125	\$69.25
<b>Hand Saw Replacement Blades</b>		
20" x 1/2" Blades	#80098	\$4.00
25" x 1/2" Blades	#80100	\$4.00
27" x 1/2" Blades	#80102	\$4.00
28" x 1/2" Blades	#80099	\$4.00
<b>Jarvis Wellsaw Blades and Supports</b>		
Model 404 and 444 Blades/Supports available. Call for pricing!!		



## EFA 63 Replacement Blade

Item #003009201  
**\$146.41**



# SUPPLIES

Description	Item #	Price
<b>Lug Carts</b>		
Single Cart	LUGCT-1	\$139.95
Double Cart	LUGCT-2	\$210.50
Six-Lug Cart	LUGCT-6-KD	\$427.95
<b>Heavy Duty Poly Lugs</b>		
13" x 22" x 8½" Gray	319506621	\$13.95
<b>Poly Lug Liners</b>		
Blue Lug Liners, 1.5 mil. (250/Case)	16209	\$127.65
<b>Poly Clips</b>		
S-740 CLIPS	300030	\$205.75
S-735 CLIPS	300029	\$189.00
<b>White Oil</b>		
Dupey White Oil (1 Gallon)	60100	\$25.15
Dupey White Oil Case (4 - 1 Gallons)	60101	\$100.00
<b>Lubricants &amp; Mineral Oils</b>		
Ultra Guard Cartridge	MAINCA2	\$20.40
PRO-TECH with Antimicrobial	MAINCA	\$19.80
PRO-TECH Pure White Mineral Oil	MAINCA1	\$17.10
Taylor Lube 4 oz. Squeeze Tube	62100	\$7.75



## Powder Free Vinyl Gloves

100 Gloves  
**\$10.00**

\*Available in Small, Medium, Large, & X-Large



## String Knit Gloves

12 Gloves  
**\$7.50**

\*One Size Fits Most



# AGING CABINET

- VERSATILITY OF USE
- TOTAL CONTROL OF PARAMETERS
- INNOVATIVE & ELEGANT DESIGN
- CELLAR EFFECT
- HUMIDITY CONTROL
- PRODUCT TOTALLY MADE BY EVERLASTING
- PROCESS GRAPHICS
- UV STERILIZATION
- VENTILATION SPEED CONTROL
- USB DATA TRANSFER
- PIN PRODUCT PROBE
- REMOTE SYSTEM



All the Lo Stagonatore cabinets allow you to manage temperature, humidity, and ventilation parameters, depending on the product requirements, for a safe and total control over the Seasoning, Dry-Aging and Ripening processes.



**700 VIP**



**1500 VIP**

# KNIFE SHARPENING

## X-tra EDGE

### Model CE8-01 Knife Sharpener

- Sharpener is belt driven for a smooth, quiet performance.
- Sharpen knives on the left side.
- Hone/Polish knives the on right side.
- No need to wet stones, runs fully dry.
- Accepts any length of knife.



### NORTON IM313 MULTI OILSTONE SET

- Contains reservoir for oil
- Replaceable and rotatable oil stones



## VICTORINOX



8" Breaking Knife (#72000)



6" Curved Semi-Stiff Boning Knife (#72002)



6" Beef Skinner (#72006)



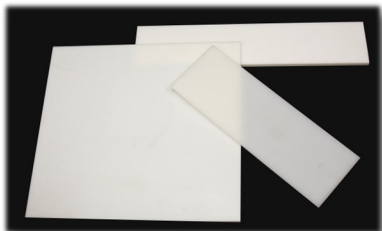
### Giesser Primeline 6" Boning Knife



\$25.75

### Custom Cut Poly Board

Poly board getting old? Call us for a quote! We can cut to any size and thickness.



## CUTLERY

Description	Item #	Price
<b>Knives &amp; Sharpening Steels</b>		
8" Breaking Knife	72000	\$35.00
10" Breaking Knife	72003	\$42.65
12" Cimeter Knife	72001	\$63.30
5" Curved Semi-Stiff Boning Knife	72004	\$20.75
6" Curved Semi-Stiff Boning Knife	72002	\$23.30
5" Lamb Skinning Knife	72005	\$30.00
6" Beef Skinning Knife	72006	\$32.30
10" Round Regular Cut Sharpening Steel	72008	\$33.80
14" Round Regular Cut Sharpening Steel	72007	\$38.15
6" Semi-Flexible Boning Knife		\$21.32
3-1/4" Straight Paring Knife		\$6.11
10" Curved Cimenter Knife		\$48.14
12" Curved Cimenter Knife		\$58.50
6" Narrow Straight Semi-Flexible Knife		\$27.00
<b>Hand Tools</b>		
Flat Handle Hook	3145-03241	\$10.00
Block Scraper	314504911	\$15.55
Poly Bone Dust Scraper	421911251	\$4.20
Stainless Steel Bone Dust Scraper	384532151	\$34.55

# SPLITTING SAWS



## Reciprocating Saw

Features:

- Powerful universal motor, splash-proof
- Ergonomic position of handle
- Anti-vibration package
- Easy to clean housing



EFA 63

## Splitting Saw

Features:

- Coldwater spraying system for cleaning and cooling of the saw band
- Less noise and vibration
- Safe to operate by safety switches for covers
- Long band life by optimized elastic band guide



EFA SB 287 E

## Kentmaster 75 Splitting Saw

Features:

- Blade opening is 16"
- Sealed electric motor
- Versatile for any small processing plant



## Kentmaster 151 Splitting Saw

Features:

- A reciprocating and Cleaver-Action
- May be re-sharpened for years of use
- Clean cuts with lower amounts of bone dust



# BAND SAWS



## Biro 3334SS-4003FH

The rigid fixed stainless steel head provides vibration free operation at higher blade speeds. This lets you use a narrow blade which helps you minimize product waste, operator fatigue, and maximize productivity and profit. Like all Biro saws, the 3334SS-4003FH has heavy duty stainless steel construction and a roller bearing drive system.



## Biro 44SSFH

A heavy-duty, high volume bandsaw that is well-suited for continuous intensive operation. Biro's EZ-Flow meat carriage reduces operator fatigue and increase productivity. The 18" diameter saw blade wheels with a 17-5/32" horizontal cutting clearance and a full 17-1/8" vertical cutting clearance lets you cut larger product pieces than other saws.



## Biro 55

With the standard front moving carriage and meat gauge plate and 20" H x 21" D cutting clearance, you can use the same saw to produce retail cuts or split loins and break quarters.





# SLICERS

## Kolossal 300 IK SA



### Features:

- Automatic and manual mode
- Built in sharpener
- Tilting away carriage
- Slice thickness up to 24 mm

## ABM 350 G Comfort



### Features:

- Automatic slicer
- High precision capacity and cutting, one carriage speed and one stroke length
- Integrated sharpener
- Guide ridges for better running product

## ABM 350 GA



### Features:

- Automatic high precision capacity and cutting
- Integrated sharpener
- Easily water cleaning
- Reduced loading height



## Sirman Anniversario 300

### Features:

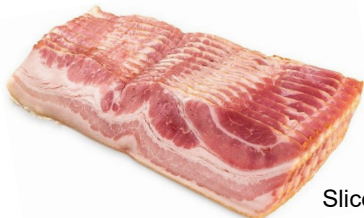
- Adjustable dial to select thickness up to 1/8"
- Built-in two stone, dual action sharpener
- High visual appeal
- Rounded, edgeless design for easy cleaning



## Biro 109PC Horizontal Slicer

The 109PC can slice up to 180 slices per minute of boneless meat products. The specially designed sickle-type curved smooth blade slices the product cleanly (no tearing).

The 109PC Electronic model operates by a 7 programmable keypad that controls a microprocessor. Tailor the microprocessor to your product thickness from 1/16" indefinite thickness to 30" max., reducing the time to change product thickness and operator training. Product pusher automatically returns to home position after the last slice.



Slice whole muscle boneless product accurately, consistently, and efficiently!

# SCALES and WRAPPERS

## Digi DS-502 Portion Scale

The DS-502 is a highly accurate portion scale ideal for weighing small items with precision. The scale is lightweight, compact, and portable, and weighs up to 11 pounds!



## Digi DS-781 Price Computing Scale

The DS-781 price computing scale will provide you with fast, accurate, and friendly sales transactions for your customers. The scale itself is compact and portable. The high contrast LCD display is easy to read and with the ability to program 99 PLUs makes it user friendly. Can weigh up to 30 pounds.



## Yamato DP-6700 Platform Scale

The DP-6700 series platform scale works anywhere operating on dry cell batteries or powered with an AC/DC power adapter. Large display for readability. Available in 150 and 300 lbs capacity.



## Digi AW-5600ATII Wrapper

Features:

- Fully automatic
- PC based
- Weighs, wraps and labels products
- Touch screen colored display
- Linerless labels with auto cut to label size

The AW-5600AT wrapper promises the opportunity to increase total sales. An increase in sales is attainable due to less package waste, greater presentation on shelves, and reducing labor hours.





# SCALES and e.Labels

## Digi SM-120 Scale Printer

The SM-120 increases throughput of counter transactions with speedy weighing and printing operation. Its robust yet sophisticated appearance looks good on counters in modern stores, providing added value for your operation. The SM-120 has a LCD customer display makes it easier for them to check necessary information



## Digi SM-5300x Scale Printer

The SM-5300x is a PC based scale-printer. It comes with a interactive color touchscreen and customer display. The touchscreen makes this scale user-friendly and easy to use. With a 30 lb., 60lb. and 300 lb. weighing capacity and easy to change labels, this scale is perfect for any retail counter.



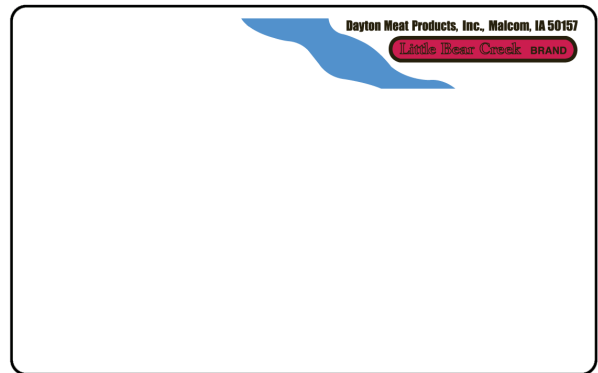
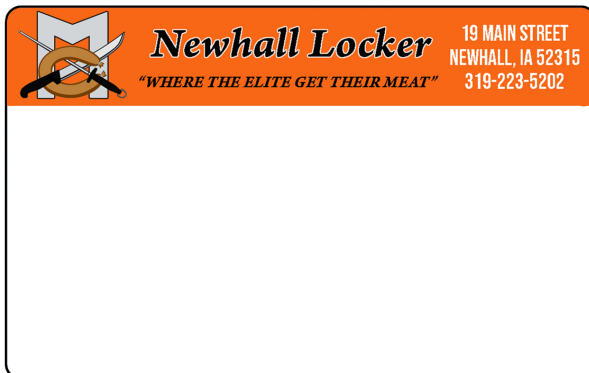
## Digi e.Label

An electronic price label that displays product information and wirelessly connects to the SM-5300x Scale Printer. Update a price or a product name on the scale and see the labels update simultaneously. Improve your customer display with clear writing and reduce labor hours required to manually update price tags.



# PREPRINTED LABELS

Is your current label boring? Call us and we can help set-up a new pre-printed label!



# STUFFERS

**D**aniels **F**ood **E**quipment



## Daniels DFS 55 Stuffer

- Excellent for both long and short product runs.
- Knee lever operation leaves your hands free to handle product.
- The lid swings out of the way for loading and cleaning.
- Powered by a reliable hydraulic system.
- It has an adjustable pressure control valve for different product consistence.
- Features all stainless steel construction
- Includes four extruding nozzles
- This stuffer holds 55 lbs. and includes a self-locking lid



## Mainca FC-30 Stuffer

- Capacity of 50 lbs.
- Equipped with independent oil tank
- Adjustable speed and pressure
- Fixed cylinder and piston machined to close tolerances
- A smooth exit avoids clogging and color discoloration
- Automatic piston decompression when the knee lever is released
- Easily removed piston for cleaning
- Supplied with 3 nozzles: 15, 20 and 30 mm
- Made of stainless steel
- Lid & piston made of aluminum



## Risco RS 110 Continuous Vacuum Stuffer

### Filling Process:

- Accurate feeding of the food mass
- Gentle filling process
- Effective vacuum process on the product
- Exact portions (max error +/- 1%)

### Production Flexibility:

- Easy production changes
- Great variety of accessories available
- Simple control-system programming
- Fast cleaning of components

### Cost Efficiency:

- Low wear of moving parts
- Reduced pressure generated in the filling system
- Minimum overall dimensions

### Advantages for the final product:

- Excellent product definition
- Preservation of original characteristics
- Optimum compaction
- Precise portion weights







## Why clip with PDC-A 700?

The automatic double-clippers of the PDC-A line are suitable for all sizes of operations – for midsize or large production runs. They reliably close all casings. The PDC-A 700 closes fibrous casings up to 105 mm caliber and plastic casings of even larger diameter. Using the PDC-A means that all products – single portions or chains, long sausages, half rings and rings – can be produced efficiently.

### Advantages

- Fully automated operation for continuous production and high clipping speeds.
- Safety casing brake with hand guard; operation without casing brake is blocked.
- Can be upgraded when needed, modular design.
- Less air consumption for low operating costs.
- Second supply option for the clip stick at a low height for smaller operators.
- Ergonomic control buttons directly at the filling horn for fast, functional operation: first clip, emulsion supply button, automatic operation on/off.
- Electrically controlled.
- Extremely large swivel range of clipping head for easy casing change.
- Low noise operation.
- Height and inclination of product tray and roller discharge adjustable without tools.
- Pneumatic cut-off knife.
- Easy machine operation thanks to clearly and functionally arranged control elements for product-specific adjustments: control for chubs in a chain, pre-select for loops and labels, pneumatic clip pressure adjustment, adjustment of clip closing height and punch delay time, adjustment of punch and separator speed.
- V-shaped trolley for optimum positioning under the table with simple height adjustment with filling horn key.
- Easy coupling to the filler: trolley for easy transport and fixing with lockable steering wheels.



**CUSTOM  
PRINTED  
CASINGS  
AVAILABLE**



## Function and Operation

The automatic double-clipper is coupled mechanically and electrically to the filler. Upon closure of the separator, the filled casing is centered while the emulsion is separated, and is securely closed with the double-clipping system. At the same time the casing can be cut off automatically with the pneumatic knife via the function of the chain control. For hanging up the sausages, loops can be applied and clipped automatically with the optional looper GSE. Ergonomically arranged operating elements make the machine easy and comfortable to operate. The pre-set precise weight portion is called up by the filler using the operator buttons directly at the filling horn and is clipped automatically.

# MIXER-GRINDERS

## Biro AFMG 24 Mixer-Grinder



- Ideal mixer grinder for today's compact supermarket meat room
- 5 hp auger motor and size 32 head can produce an output of up to 68 lbs. per minute
- Stainless steel hopper, frame, and legs will stand up to years of daily washdown and still resist corrosion.



## Biro AFMG 52 Mixer-Grinder

- Perfect for large processors and supermarkets
- Produces up to 100 lbs. output per minute
- Stainless steel frame and hopper are corrosion resistant

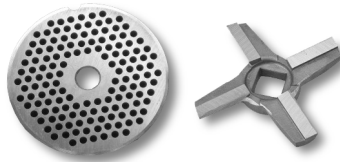


# KNIVES and PLATES

## Sharpening

Got an old knife or plate that needs sharpened? Send it to us and we can make it new again!

- #12 .....\$10.00
- #22 .....\$10.00
- #32 .....\$13.50
- #52 .....\$18.50
- #56 .....\$18.50



### Everlasting Knives

Everlasting knives are the longest wearing solid knife available today. Speco's Everlasting knives outwear regular drop-forged or snap-in knives many times over. These knives have a very high wear-resistant cutting edge fused solidly to a drop-forged frame and can be resharpened.

### Enterprise Style Plates

Enterprise style refers to stand set ups for most American style meat grinders. Enterprise style will have a square drive for the knives and the plates are offered in reversible or solid hub. Most plates have a radius keyways. Some older designs have two flat sides (Cleveland) or one flat side (Toledo), while a combination of all styles is known as Universal.

Description		Item #	Price
<b>Knives</b>			
#12 Knife		EDGE 12KNIFE	\$40.00
#22 Knife		EDGE 22KNIFE	\$41.50
#32 Knife		EDGE 32KNIFE	\$43.00
#52 Knife		EDGE 52KNIFE	\$81.00
<b>Plates</b>			
#12 Plate	1/8" Holes	EDGE1218	\$45.10
	3/16" Holes	EDGE12316	\$44.95
	3/8" Holes	EDGE1238	\$44.95
#22 Plate	1/8" Holes	EDGE2218	\$61.00
	3/16" Holes	EDGE22316	\$52.75
	3/8" Holes	EDGE2238	\$52.75
#32 Plate	1/8" Holes	EDGE3218	\$73.25
	3/16" Holes	EDGE32316	\$70.00
	3/8" Holes	EDGE3238	\$63.55
#52 Plate	1/8" Holes	EDGE5218	\$172.30
	3/16" Holes	EDGE52316	\$144.30
	3/8" Holes	EDGE5238	\$140.00

## Thunderbird TB-300E Grinder

Thunderbird, a respected name in midsize commercial meat grinders, builds high performance grinders that stand up to steady use. The 300E is a popular grinder with sportsmen and small shop owners, offering commercial construction and performance, as well as NSF certification, at a very affordable price.

**Grinds Fast:** With a #12 head and industrial 1 HP motor, the Thunderbird 300E grinds 8 to 12 lbs. per minute through a 3/16" plate. It has a 100% duty cycle for nonstop productivity. The feed throat is 2-1/16".

**Stainless construction:** The meat tray, headstock, feed screw, headstock ring and plate are all made of food grade stainless steel. Meat tray measures 8" x 11".



## Biro 922SS Grinder (Table-Top Unit)

- Reliable, durable, and inexpensive grinders designed for restaurants, meat departments, and hunters.
- Equipped with a single reduction HTD (high torque drive) belt system that provides maximum power without slippage for greater productivity.
- The bowl assembly and feed tray on each of the models can be removed without tools.
- A 22 head size and straight or flared throat



## HHP (Heavy Horse Power) Grinders

- A series of manual feed grinders with a range of bowl sizes and motor sizes that can be tailored to meet grinding needs. With bowl sizes of 48, 52, or 56 and motor sizes of 5, 7.5, 10, or 15 hp.
- All of the HHP series grinders feature single reduction chain drive transmissions for maximum efficiency,
- Includes tapered roller bearings for low maintenance and long life.
- Output capacities ranging from 1,500 lbs. (680 per hour to 7,500 lbs.).

### Models:

- 548SS
- 552SS
- 7548SS
- 7552SS
- 1056SS
- 1556SS



# VACUUM SEALERS

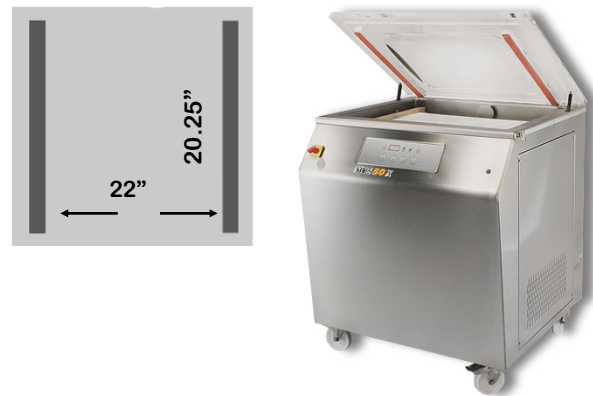


The MVS series is a tried and true model that has been a staple in the industry for years. With its reliable performance and timeless design, these vacuum sealers are perfect for those who value simplicity and durability. This is the right machine for any heavy-duty users that simply require basic functionality.

## Minipack MVS 45x



## Minipack MVS 50x

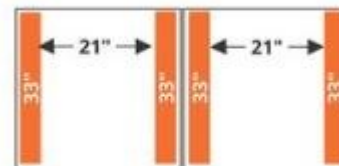


## MVS 840



### Features

- Double chamber swing lid model
- Water resistant digital display
- Independent quick change seal bars
- Self diagnostic



Left and Right Model

Width x Length: 58.75" x 38.75"  
Height with lid open: 53"

## Minipack MX 4

- Ideal for batch operations for foods with larger volumes, such as meats.
- Pop-out seal bars with convex wire for optimal liquid sealing can be ordered in two different configurations - Front/Back or Right/Left seal bars.
- 5" full color touch screen with intuitive icons
- Spill-over prevention, anti-product crush, optimal Mbar cycles





# BRINE PUMPS

**D**aniels **F**ood **E**quipment

**Plainsman**

## Daniels Food Equipment 10000-B



Portable Brine Pump Table

Inject brine or seasonings into meat products using compressed air. No expensive brine pumps to wear out!

This is a 5.5 gallon stainless steel tank model. Add the optional brine pump table to mount the tank for a completely portable system.

**\*Air compressor is not included.**

## Plainsman BP-1 Brine Pump



### Electric Specs

- 1/10 HP
- 120V
- 0.7 Amps
- 60 Hz

The Plainsman BP-1 is an electric brine pump, with a stainless steel case and needles. It features a quick change adapter for switching from single to the 3-needle attachment. Single needle attachment included with the machine. 3-needle attachment is extra.

# VACUUM TUMBLERS

**D**aniels **F**ood **E**quipment

### Features:

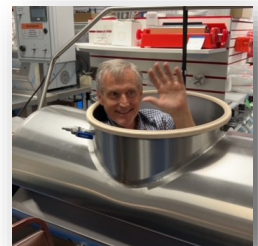
- All stainless steel construction
- Easy to move around
- NEMA 4 control box
- Easy to remove lid
- Swivel locking casters
- Made in the United States



DVTS 50



DVTS 300 & 500



Paul Dupey

# TENDERIZER



## Biro PRO-9HD Tenderizer

The PRO-9HD tenderizer is a merchandising center and offers great versatility. The tenderizer comes with a standard tenderizing cradle that cuts deep (1,020 times per revolution) into the product to sever, sinew, and fiber. Turn the tenderizer into a Knitting machine by changing the position of the rear stripper and feed 2-3 smaller pieces off hard-to-merchandise pieces to form one value-added knitted steak. Biro offers four other cradles ranging from outlet tenderizing, stew-strip cutting, scoring, and star punching. All cradles can be switched out in a matter of seconds.



# PATTY FORMER



## Biro F2000 PLUS Patty Former

- Designed for production of a wide variety of meat and food products
- Maximum production output capability from approximately 1,000 to 3,500 cycles per hour.
- A number of drum mold die shapes are available  
Vary from the standard round shapes of different diameters, to special shapes such as square, oval, rectangle, chicken nuggets, pork chop, etc.
- Operator can select product weights by changing the drum die depth (thickness) up to 1¼" (32mm).
- The patty former is small, compact, and easy to clean.



## Biro F1000 PLUS Patty Former



- Maximum production output capability: 1,300 cycles per hour
- Stainless steel body, hopper, and hopper cover
- A number of drum mold die shapes are available.
- Product weight can be changed by the drum die depth

## Patty-O-Matic Easy Slider



- Variety of mold shapes and depth
- Makes up to 6 portions
- Portable for easy storage

## Mini-Pak



The Mini-Pak Series of units range in production capacity from 150 pounds to 1,000 pounds (of a heavy, dense product) per load.

### Features:

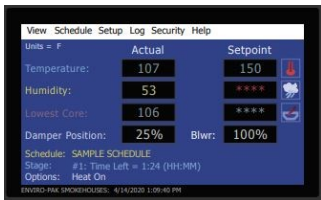
- All models are electric heated
- Vertical airflow of a constant airflow design
- Fully welded stainless steel interior and exterior

### Additional Features

- In Duct Wash/Rinse System
- Liquid Smoke or Natural Wood Smoke
- Cooling coils for Cold Smoking
- Steam Cook

## Martini 280

- Capacity of 280 lbs.
- Includes wash/rinse, humidity control and product shower
- 36" depth design
- Fully welded stainless steel construction
- Built-on smoke generator



Control system connects to a phone.

# TABLES and EQUIPMENT STANDS

- Various sizes available
- Different backsplashes
- Stainless steel or galvanized legs
- Stainless steel or galvanized undershelf



5" Backsplash with doors



No Backsplash



Poly Table



6" Backsplash with sink

# ROLL STOCK MACHINE

Pack3000 Vesta Roll Stock Machine

# Pack3000



Pack3000 VESTA is a versatile, compact, and reliable line of thermoforming machines. Package options available include: gas, skin below the film line, shrink, flexible, and rigid with materials up to 450 Micron. The Vesta line has a rock solid stainless-steel frame and sloped surfaces for complete wash down. The machine components are easy to access which allows for easier and quicker maintenance. The Vesta is a very efficient machine built with the highest quality components and, capable of reaching up to 6 cycles/minute depending on the application. This machine is UL / CSA / CE approved and has a 2 years warranty on parts.

## COMPLETE MACHINE DESIGN :

- » **Flex vacuum** or Rigid & gas application (skin application possible)
- » **Multiple die size**, interchangeable, for products of various size & shape
- » **Servo driven motor** for speed and precision
- » **Guillotine knife** standard, optional Corner rounding
- » **Printed film** registration optional
- » Code dating, printing and thermoprint optional
- » **2 years warranty** standard
- » **Busch** vacuum pumps
- » **Easy** to service and maintain





# JEROS WASHER

## Optimum Handling

The JEROS utensil washers have a specially designed lid which opens fully to allow easy operation and loading without causing back strain to operators.

## Flush Hose

The flush hose makes it possible to reuse the wash water.

## Energy Savings up to 25%

All the machines are now available with "I-Version" as standard. The machine therefore requires less operating power, resulting in energy and water savings up to 25% for all models.

## ECO Wash

Standard on all models this includes an environmentally friendly "ECO Wash" program for less dirty objects.

## New Double Micro-Filter

Unique double filtration system provides an efficient filtration of the wash water— thus entails a perfect washing result with less soap and water consumption.



Model 9130



Model 8150



Model 8160

# OZO KLEEN

Chlorine Free

Ozo Kleen provides customizable product formulation to meet any sanitation or environmental needs. Replace traditional cleaning methods with a safer and economical solution. Easily connect the portable ozone system to a wall mounted foam station for cleaning of all surfaces.





Southern Pride® handcrafts a line of fully automatic, wood-burning gas-fired or electric smokers with 8 different industrial models to choose from. Each model is an outgrowth of meticulous research and development through decades of serving all segments of the food service industry. Southern Pride® continually develops and refines equipment designs to meet the changing needs of the foodservice industry.

## SC-100 Electric Smoker

The SC-100 utilizes woodchips instead of logs and electric elements instead of gas. A woodchip box with an electric element allows the application of smoke to the product. The stainless steel exterior ensure easy cleaning and years of use.

**New in 2024!**

<u>Approximate Smoker Capacities</u>	
(Capacities will vary based on physical shape, weight, and method of loading for each product specified.)	
	<u>Standard</u>
Pork Butts (8-10 lbs.) each	12 Pieces
St. Louis Ribs (2.75 lbs.) each	12 Pieces
Whole Chicken (3-4 lbs.) each	24 Pieces
Beef Brisket (12-15 lbs.) each	4 Pieces



## SC-300 Electric Smoker

The standard SC-300 features dual smoke elements with woodchip boxes to produce the maximum amount of smoke. An optional feature is a steam system that replaces the right smoke element in the cabinet. The standard control allows the ability to select any combination of heat, smoke and steam, if applicable.

<u>Approximate Smoker Capacities</u>		
(Capacities will vary based on physical shape, weight, and method of loading for each product specified.)		
	<u>Standard</u>	<u>Max</u>
Pork Butts (8-10 lbs.) each	30 Pieces	30 (5 Racks)
St. Louis Ribs (2.75 lbs.) each	25 Pieces	50 (10 Racks)
w/ Optional Vertical Rib Racks	65 Pieces	65 (5 Racks)
Whole Chicken (3-4 lbs.) each	40 Pieces	56 (7 Racks)



## SPK-500 Gas Rotisserie Smoker

Cooking capacity, price point and footprint make the SPK-500 the most popular rotisserie smoker. With over 50 square feet of cooking surface, this smoker can handle medium to large batch cooking.



### Approximate Smoker Capacities

(Capacities will vary based on physical shape, weight, and method of loading for each product specified.)

	<u>Standard</u>
Pork Butts (8-10 lbs.) each	60 Pieces
St. Louis Ribs (2.75 lbs.) each	60 Pieces
Whole Chicken (3-4 lbs.) each	70 Pieces

**Special Treated Hickory Wood Chips** \$99.00 40 LBS.

**Hickory Logs** \$42.00 50 LBS.



## SPX-300 Mobile Rotisserie Smoker

With 30" wide product racks and 30 square feet of cooking surface, the SPX-300 proves to be the perfect introductory smoker in a small package.

Southern Pride offers mobile smokers in four of their most versatile gas smokers (MLR-150, SPK-300, SPK-500, and SP-700), each flush mounted on a purpose-built trailer. Mobile smoker are the best option for on-site cooking and catering.



### Approximate Smoker Capacities

(Capacities will vary based on physical shape, weight, and method of loading for each product specified.)

	<u>Standard</u>
Pork Butts (8-10 lbs.) each	32 Pieces
St. Louis Ribs (2.75 lbs.) each	24 Pieces
Whole Chicken (3-4 lbs.) each	40 Pieces



Option for a red trailer (Extra Cost)

# REFRIGERATORS and FREEZERS



Atosa offers a range of equipment suitable to any operation. The line-up includes fryers, griddles, ranges, freezer, and refrigerators. A variety of options ensures that the equipment is a perfect match to any space.



MCF8723GR Glass Merchandiser



MBF8507GR Reach-in Refrigerator



MPF8202GR Refrigerated Prep Table

# RANGES, FRYERS, and GRIDDLES



Henny-Penny Fryer



AGR-4B Gas Range



ATMG-36 Griddle



# WALK-IN COOLERS and FREEZERS



## U.S. Cooler Walk-In Coolers and Freezers

U.S. Cooler walk-ins are designed with flexibility to meet your needs. They offer a selection of standard sized walk-in coolers as well as custom sized units that can be built to your specifications. All U.S. Cooler products meet or exceed EISA requirements.

### Features

- Inner and outer metal skins
- 4" insulation core
- Air tight seal between panels to prevent any air infiltration.
- All products exceed EISA requirements



Walk-In Cooler/Freezer Combo



Standard Sized Freezer

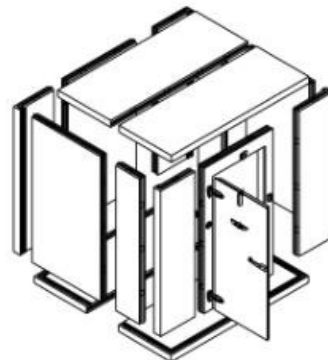
Standard sized freezers are part of the QUICKSHIP program and usually ship within 3-5 business days. If you are in need of a custom sized unit they can build to your specifications and generally ship within 3 weeks.



Walk-In Cooler with Glass Window

### Customizable Features

- Metal skin
- Metal color
- Refrigeration system



# NO-HOOD NEEDED

## Alto-Shaam Vector H4 Multi-Cook Oven



### Features:

- Programmable, touchscreen control
- Each chamber has its own independent air path, heat source and fan
- Easy recipe upload/download via USB port
- UL-listed ventless catalytic converter
- Double-pane glass door
- 1 wire stainless steel rack and 2 jet plates per cooking chamber

Available in 2, 3, or 4 chambers with half-size sheet pan or full-size hotel pan capacity. Wide option also available with 2 or 3 chambers.

## Fri-jado Rotisserie

### Features:

- Automatic (overnight cleaning)
- Can be positioned anywhere in a store
- USB connection for transfer of data and programs
- Touch screen controls
- Cook Correction detects and corrects abnormalities during the cook cycle
- Eco Cooking saves 5% on energy consumption by using residual heat
- 14 basket or rack positions
- Rotor for up to 28-64 (3-4 lbs.) chickens per cook cycle



TDR 7/8 S+7/8 S Auto-Clean



## UNOX CHEFTOP MIND.MAPS OVEN

### Features:

- Adjusts cooking process to actual volume of product
- Estimates the dirtiness of the oven and suggesting the best automatic cleaning mode
- Contains multiple high flow reversing fans to produce uniform results and reduce cooking time
- Digital touch screen display
- Reduce energy, water, and fryer oil use
- Create recipes online and share among multiple ovens



Available in multiple sizes for countertop or floor space.

**Dependable Service Nearby!**  
Give Dupey Equipment a call to discuss repair needs on your equipment.



- Wide selection of manufacturer stocked parts
- Trained service technicians support the machines sold
- Machines may be serviced onsite or brought back to the shop for repair
- Loaner machines may be available



WITH EVERY \$1000 PURCHASE RECEIVE A  
FREE DUPEY JACKET! \*

COMES IN SIZES OF: M, L, XL, 2XL



LOOK AS FASHIONABLE AS MARK THIS WINTER!

\*MARK NOT INCLUDED and WHILE SUPPLIES LAST

**ANY STOCK SUPPLY ORDER OVER \$500.00 IS FREIGHT FREE!**

\* EXCLUDES PARTS AND EQUIPMENT

A FEW OF THE BRANDS WE CARRY!



To place your order call or email:

Phone: 515-223-0700

Toll Free: 800-798-1857

Email: [stacy@dupeyequipment.com](mailto:stacy@dupeyequipment.com)

[Dupeyequipment.com](http://Dupeyequipment.com)



\*Pricing in catalog subject to change without notice.